

## Communication and Control Section Review

### Reviewing Terms

On the line provided, write the letter of the term from the list that matches each description. Each choice can be used once, more than once, or not at all.

- |                                                                                                                             |                      |
|-----------------------------------------------------------------------------------------------------------------------------|----------------------|
| _____ 1. system made up of glands that send signals to each other and distribute information to other cells in the body     | a. nervous system    |
| _____ 2. structure at the base of the brain that coordinates the activities of the endocrine system                         | b. neuron            |
| _____ 3. chemical produced by endocrine glands that travels through the bloodstream and affects the behavior of other cells | c. endocrine system  |
| _____ 4. hormone produced in the pituitary gland that causes the thyroid gland to release more thyroxine                    | d. hormone           |
| _____ 5. cellular network that carries messages from cell to cell                                                           | e. receptor          |
| _____ 6. relationship between the thyroid gland and the hypothalamus                                                        | f. target cell       |
| _____ 7. gland of the endocrine system that produces thyroxine                                                              | g. pituitary gland   |
| _____ 8. control mechanism in which the secretion of one hormone inhibits further production of another hormone             | h. hypothalamus      |
| _____ 9. message-carrying cell of the nervous system                                                                        | i. thyroid gland     |
| _____ 10. thyroid-releasing hormone                                                                                         | j. thyroxine         |
| _____ 11. hormone produced in the hypothalamus when thyroxine levels are reduced                                            | k. TRH               |
| _____ 12. signal produced by the endocrine glands                                                                           | l. TSH               |
| _____ 13. specific chemical binding site for a particular hormone in a cell                                                 | m. negative feedback |
| _____ 14. area of the brain that controls the release of hormones from the pituitary gland                                  |                      |
| _____ 15. cell that has receptors for a particular hormone                                                                  |                      |
| _____ 16. hormone that increases the metabolic rate of cells and the rate at which they grow                                |                      |
| _____ 17. region of the brain to which the pituitary gland is attached                                                      |                      |

### Reviewing Concepts

If the statement is true, write "true." If it is false, change the underlined word or words to make the statement true. Write your answer on the line provided.

- \_\_\_\_\_ 18. Glands are organs that produce and release chemicals.

### Communication and Control

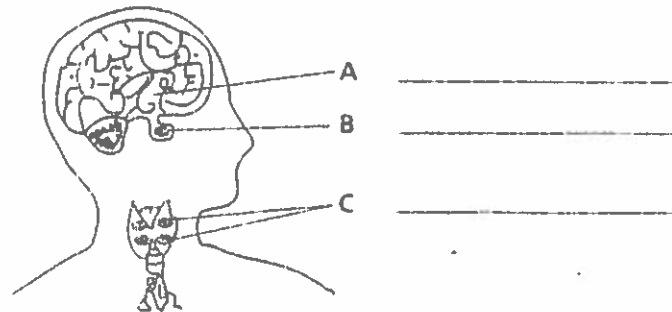
#### Section Review (continued)

- \_\_\_\_\_ 19. Endocrine glands usually release hormones into the air passages.
- \_\_\_\_\_ 20. The pituitary gland is the command center of the nervous system.
- \_\_\_\_\_ 21. Too much thyroxine results in a lowered pulse rate, lowered blood pressure, and weight gain.
- \_\_\_\_\_ 22. TRH travels from the hypothalamus to the pituitary gland through a network of blood vessels.
- \_\_\_\_\_ 23. If there is too much thyroxine in the bloodstream, no TSH will be released.
- \_\_\_\_\_ 24. Negative feedback enables the conditions within the body to remain constant over time.
- \_\_\_\_\_ 25. Steroid hormones bind to receptors on the cell surface.
- \_\_\_\_\_ 26. Steroid hormones are lipids produced from a compound known as cholesterol.

### Reviewing Skills

Answer each of the following in the space provided. Use complete sentences as appropriate.

27. Label the parts of the endocrine system shown in the diagram below on the response lines provided. (*Interpreting diagrams*)



28. Draw a graphic organizer that shows the sequence of events that occurs when there is too little thyroxine in the bloodstream. (*Sequencing*)