

Organization of the Nervous System

Section Review

Reviewing Terms

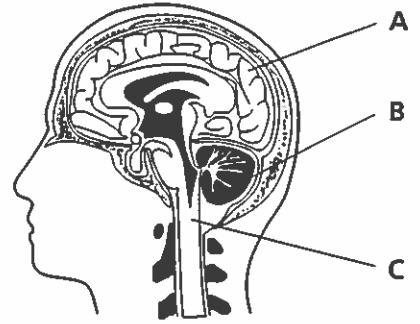
On the line provided, write the letter of the term from the list that matches each description. Each choice can be used once, more than once, or not at all.

- | | |
|-----------------------------------------------------------------------------------------------------------------------------------|------------------------------|
| _____ 1. division of the peripheral nervous system that regulates involuntary activities | a. meninges |
| _____ 2. part of the human brain responsible for learning, intelligence, and judgment | b. cerebrospinal fluid |
| _____ 3. rapid, automatic response to a stimulus | c. cerebrum |
| _____ 4. system consisting of all the nerves and associated cells that connect the central nervous system to the rest of the body | d. cerebral cortex |
| _____ 5. part of the human brain that coordinates and balances the actions of muscles | e. cerebellum |
| _____ 6. part of the brainstem (two words) | f. brainstem |
| _____ 7. reaction of which a person's response to a tap on the knee is an example | g. medulla oblongata |
| _____ 8. fluid that cushions the brain and the spinal cord | h. pons |
| _____ 9. part of the brain located just below the cerebellum | i. reflex |
| _____ 10. structure that connects the brain to the spinal cord | j. peripheral nervous system |
| _____ 11. division of the peripheral nervous system that controls voluntary movements | k. somatic nervous system |
| _____ 12. part of the human cerebrum that processes information from the senses and controls body movements | l. autonomic nervous system |
| _____ 13. three layers of tissue that protect the brain | |
| _____ 14. part of the brainstem (one word) | |
| _____ 15. second-largest part of the brain | |
| _____ 16. part of the human brain that is divided into two hemispheres that are connected at the corpus callosum | |
| _____ 17. shock-absorbing tissue that protects the brain and the spinal cord | |

Organization of the Nervous System
Section Review (continued)

Reviewing Concepts

If the statement is true, write "true." If it is false, change the underlined word or words to make the statement true. Write your answer on the line provided.



- _____ 18. In the diagram, the cerebrum is labeled A.
- _____ 19. The part of the brain labeled B in the diagram is known as the cerebral cortex.
- _____ 20. The brainstem is labeled C in the diagram.
- _____ 21. The part of the brain that connects the brain to the spinal cord is labeled A in the diagram.
- _____ 22. The largest part of the human brain is labeled B in the diagram.
- _____ 23. The central nervous system consists of the brain and the vertebrae of the backbone.
- _____ 24. The message to the leg muscles to reflexively respond to a tap on the knee comes from the brain.
- _____ 25. The two divisions of the peripheral nervous system are the sensory division and the motor division.
- _____ 26. When you turn a page of your textbook, you are using the somatic nervous system to control the movements of your hand.
- _____ 27. Parasympathetic nerves cause the heart rate to slow down.

Reviewing Skills

Answer each of the following in the space provided. Use complete sentences as appropriate.

28. Compare the two major divisions of the nervous system. (Comparing)

29. Complete the graphic organizer to show how the subdivisions of the nervous system are related. (Relating)

